

Lions Gate Christian Academy Plymouth Site Proposal





About LGCA



- 18 Years on the North Shore
- 300 students Grades K to 12
- Diverse socio-economic background
- All levels of academic achievement including significant learning assistance component
- Maximum community accessibility through low tuition structure
- Non Profit Society



More About LGCA



- Currently operate at temporary location on Harbourside Drive
- Current facilities consist of modular school and gymnasium that can be relocated
- Facilities well utilized by entire community
- Required to find a new location for the start of the 2013 school year in September
- Extremely limited availability of school sites on the North Shore
- Only identified option to date is the Plymouth site
- Previous tenants of North Vancouver School District at Maplewood



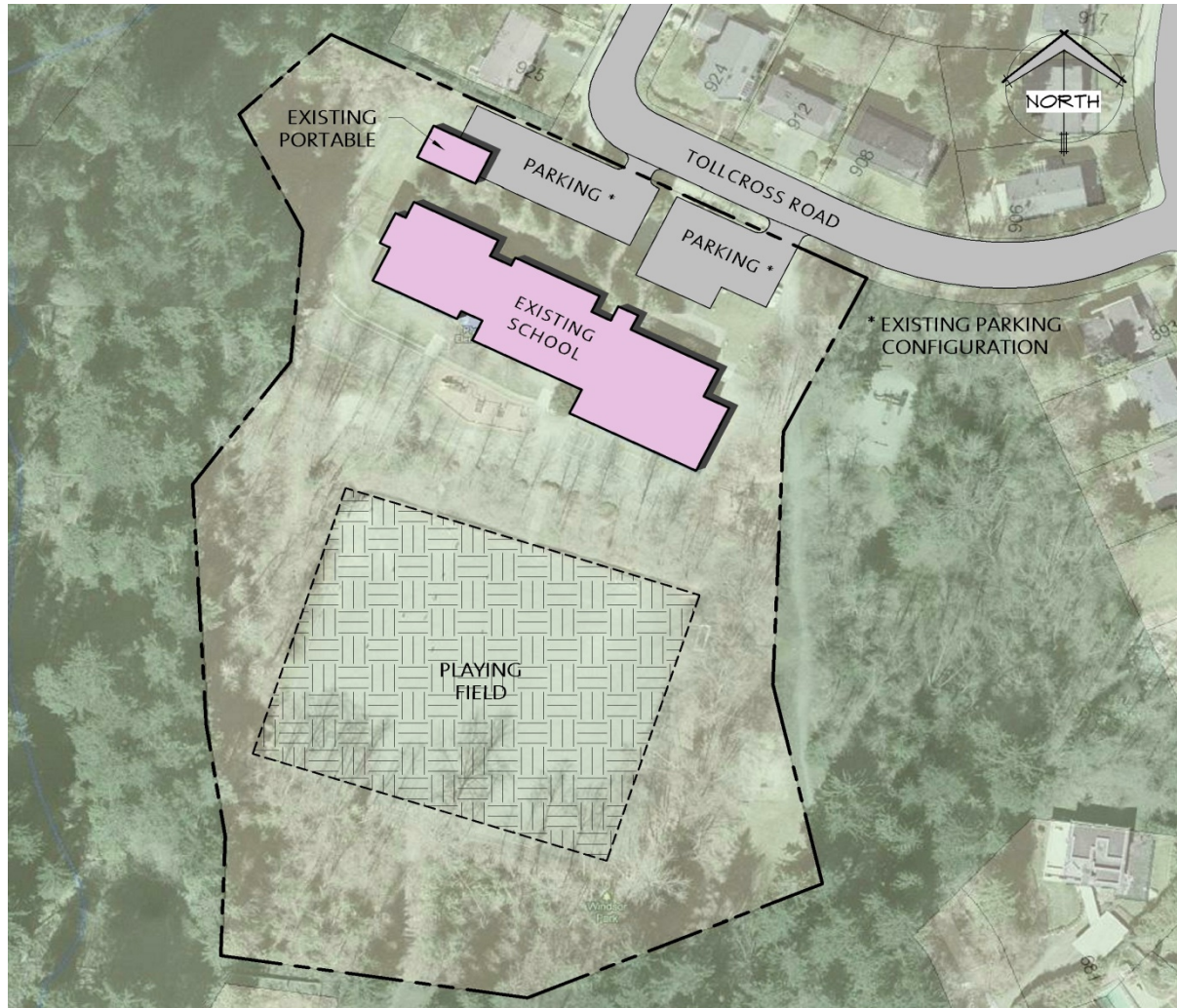
LGCA Plymouth Site Plans



- Present Plymouth facilities inadequate to meet LGCA needs and will require significant modifications or complete rebuild
- Time constraint necessitates two phase approach
- First phase is to relocate modular school and gymnasium to Plymouth by September 2013
- Second phase to renovate/expand existing building or construct new building

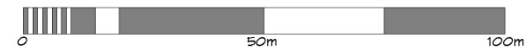


Current Plymouth Site Plan



#1 STATUS QUO

1:1000



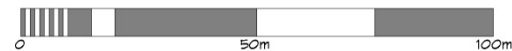


LGCA Plymouth Phase 1 Site Plan



#2 INTERIM USE

1:1000



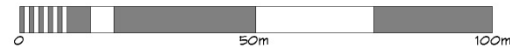


LGCA Plymouth Phase 2 Site Plan



#3 PERMANENT USE

1:1000





LGCA Plymouth Design Partner



- LGCA has partnered with Omicron to head project planning and design
- Have completed several independent school projects in the lower mainland
- Omicron project leads are long time North Vancouver residents





Traffic Impact Management



- Currently have average of 90 vehicles/day
- Traffic impact minimized by several methods
- Site design keeping drop off traffic and parking on site
- Reduction of vehicles through carpooling and busing
- Further reduction through route management
- Traffic only on school days (186 days)



LGCA Plymouth Community Benefits



- Minimal changes to the neighbourhood
- Respects the wishes of the community as expressed in DNV Official Community Plan
- Retains a valuable education site
- Creates great community resource (playfield, gym, childrens' playground, meeting rooms)
- Provides neighbourhood with local education option



LGCA Plymouth NVSD Benefits

- Provides use with maximum consistency with NVSD Values and Vision
- Keeps the Plymouth site as a school use for present and future
- Provides market rate financial benefit
- Provides North Shore students with another option for educational success





LGCA Plymouth Good Neighbour Pledge



- We consider it a privilege to be your neighbour
- Good community stewardship is an integral part of LGCA
- You will be heard and your concerns quickly acted upon
- Our students, staff and parents will respect your neighbourhood
- LGCA Plymouth will be a community asset that benefits all