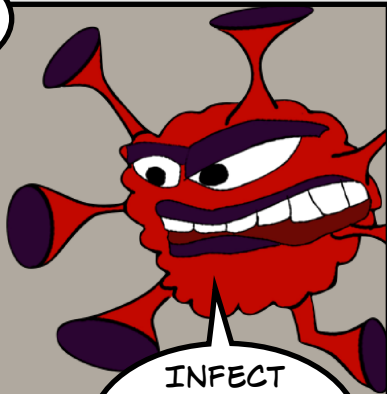
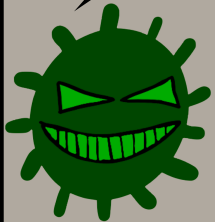


THE HITMAN

AGENT M (AKA MALARIA) IS ASSIGNED TO INFECT AND KILL VILLAGER

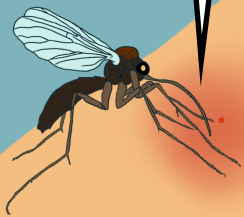
YES SIR!



INFECT AND KILL A NEARBY VILLAGER!

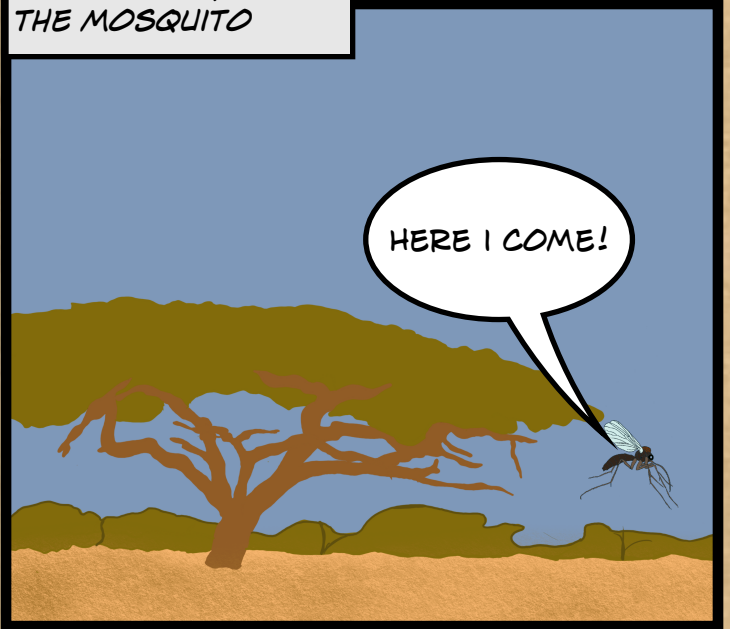
AGENT M LOCATES THE INNOCENT TARGET AND ENTERS THE BODY WITH THE HELP FROM JUAN'S NEEDLE-LIKE MOUTH

THANKS FOR THE RIDE!



HE MAKES HIS WAY ACROSS THE VAST LAND ON HIS TRUSTY RIDE, JUAN THE MOSQUITO

HERE I COME!



ONCE AGENT M IS IN THE BLOOD STREAM, HE HASTILY MAKES HIS WAY TO THE LIVER

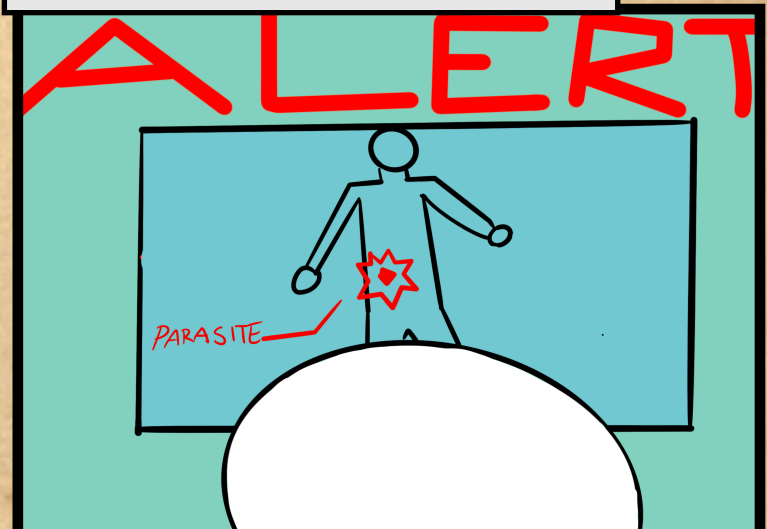
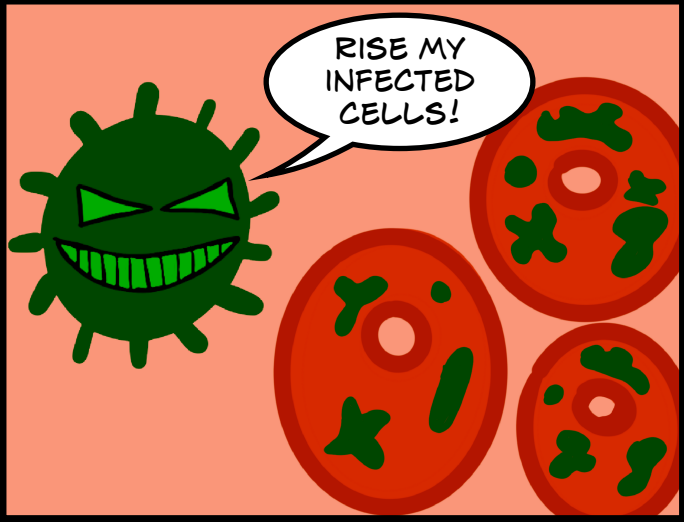
LIVER

HEHEHE



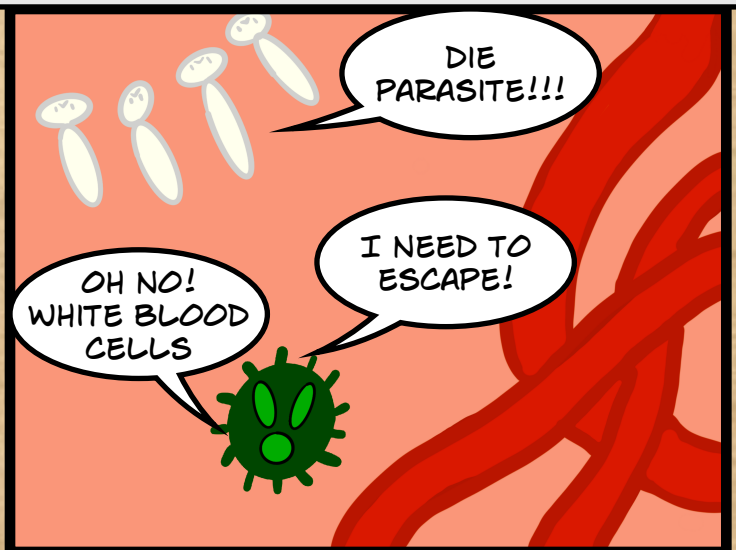
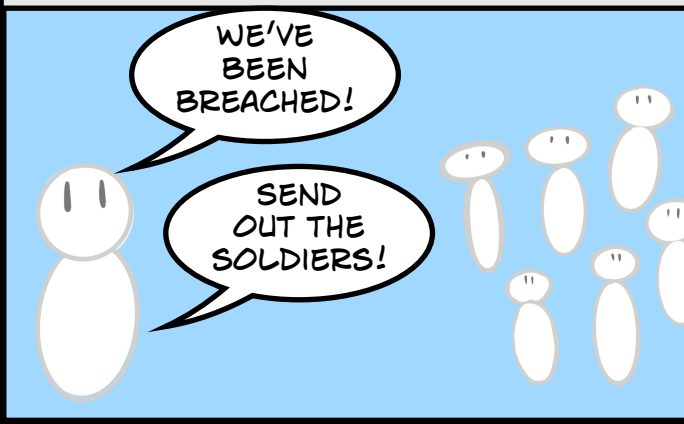
ONCE AGENT M MAKES IT TO THE LIVER, BECAUSE OF HIS SECRETORY ORGANELLES, HIS PLASMODIUM FORCES ITS WAY INTO LIVER CELLS AND STEAL A BIT OF THE CELL MEMBRANE TO FORM A SMALL POUCH INSIDE THE CELL THAT PROVIDES SHELTER WHILE HE INFECTS MORE CELLS

MEANWHILE IN IMMUNE SYSTEM HEADQUARTERS, THE DEFENSIVE WHITE BLOOD CELLS DETECT AGENT M IN THE LIVER!

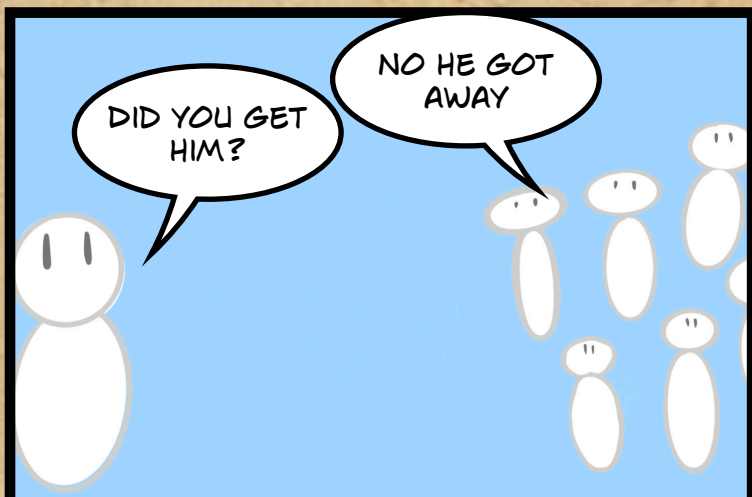
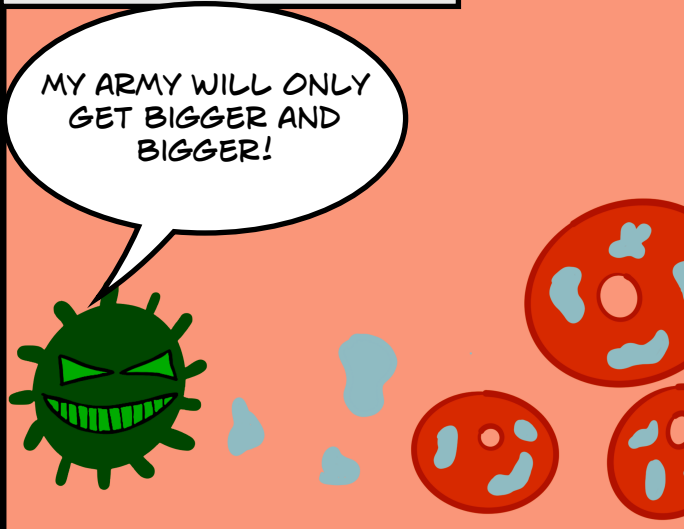


TO ESCAPE THE ATTACK FROM THE WHITE BLOOD CELLS, AGENT M FOUND AND BURIED HIMSELF IN A BLOOD VESSEL AND STARTED PRODUCING STICKY MOLECULES CALLED PLASMODIUM FALCIPARUM ERYTHROCYTE MEMBRANE PROTEIN 1 (PFEMP1) ON RED BLOOD CELLS

THE IMMUNE SYSTEM QUICKLY SENDS OUT WHITE BLOOD CELLS TO ELIMINATE THE UNWANTED INTRUDER



INSIDE A BLOOD VESSEL...

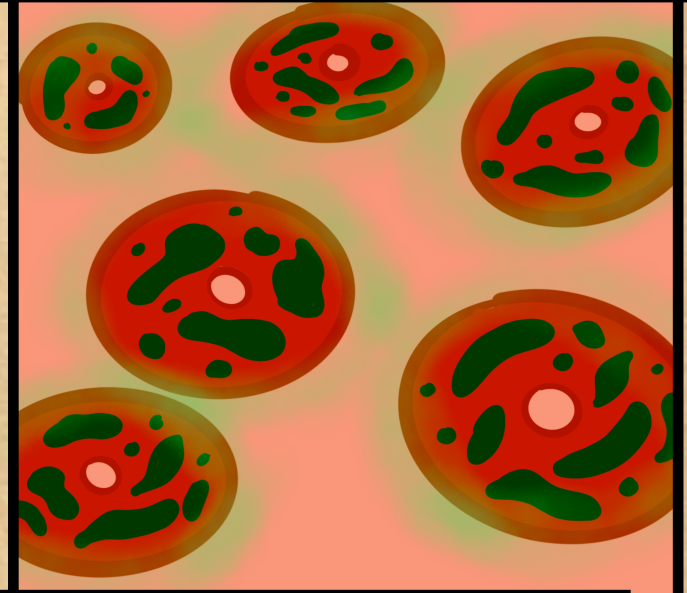


THE EMBARRASSED WHITE BLOOD CELLS RETURN TO IMMUNE SYSTEM HQ EMPTY HANDED AS AGENT M'S ARMY CONTINUES TO GROW

AS DAYS CAME AND WENT THE BODY BEGAN VOMITING, GETTING CHILLS, GETTING HEADACHES, AND HAVING DIARRHEA

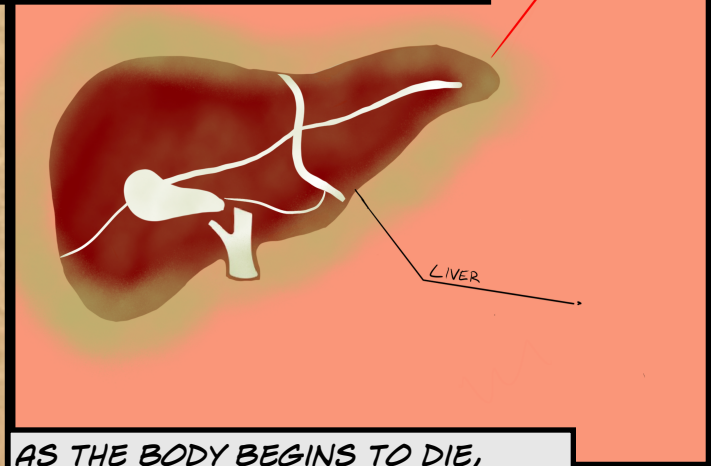


THEY RUPTURE AND RELEASE MEROZOITES WHICH GO THROUGH THE SAME PROCESS AGAIN AS THEY SLOWLY TAKE OVER THE BODY

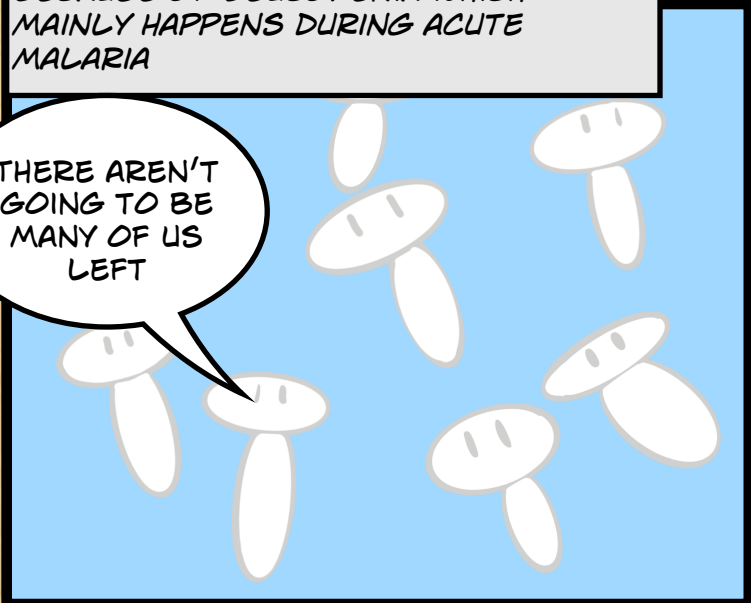


AS AGENT M TAKES OVER MORE AND MORE OF THE BODY, FEWER WHITE BLOOD CELLS ARE BEING MADE BECAUSE OF LEUCOPENIA WHICH MAINLY HAPPENS DURING ACUTE MALARIA

VITAL ORGANS SUCH AS THE LIVER BEGIN TO FAIL AS THE FINAL STAGES OF MALARIA NEAR



THERE AREN'T GOING TO BE MANY OF US LEFT



AS THE BODY BEGINS TO DIE, JUAN COMES BACK TO PICK UP AGENT M TO INFECT HIS NEXT TARGET

