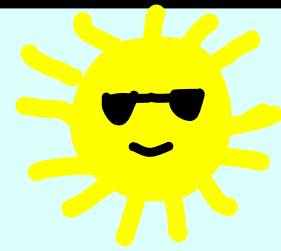
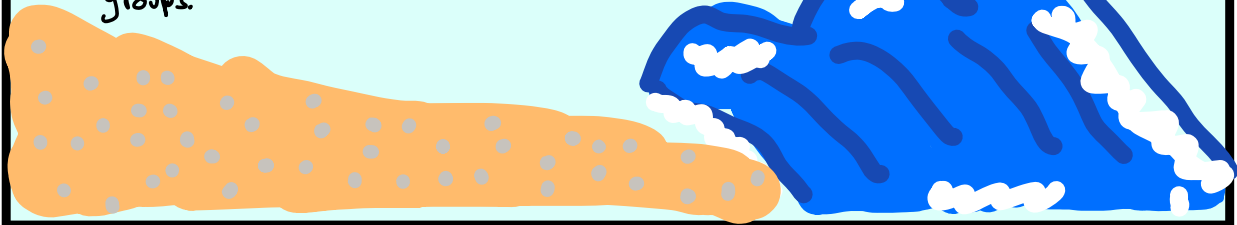


Incubation * Summer *



- Economic Crisis: The king eats on a silver platter while the peasants eat off the ground.
- Sense of government injustice: People feel wronged by the government.
- Half hearted reform: Rulers try placate the public with meaningless gifts.
- Intellectual opposition: Smart people switch to the winning side.
- Class division: People from different classes have different ideas.
- Military victory: the military is used to disband groups.



Moderate

* Fall *

- Revolution tend to be lead by moderate leaders.
- There are protests but, their not too violence.
- There's an attempt at compromise.



