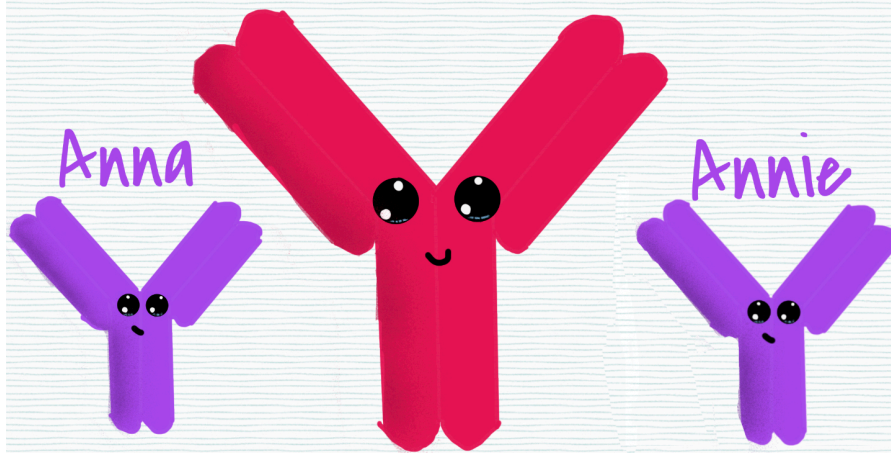


Andy the Antibody



Andy the Antibody is a very big deal in the immune system. Andy is basically the kid of Barney the B-cell. Andy's job is to work with Marty the Macrophage. Andy latches onto the pathogen and feed it to Marty. Anna and Annie are there to show that there are thousands of these antibodies. They come from the B-cell and attack the pathogens.