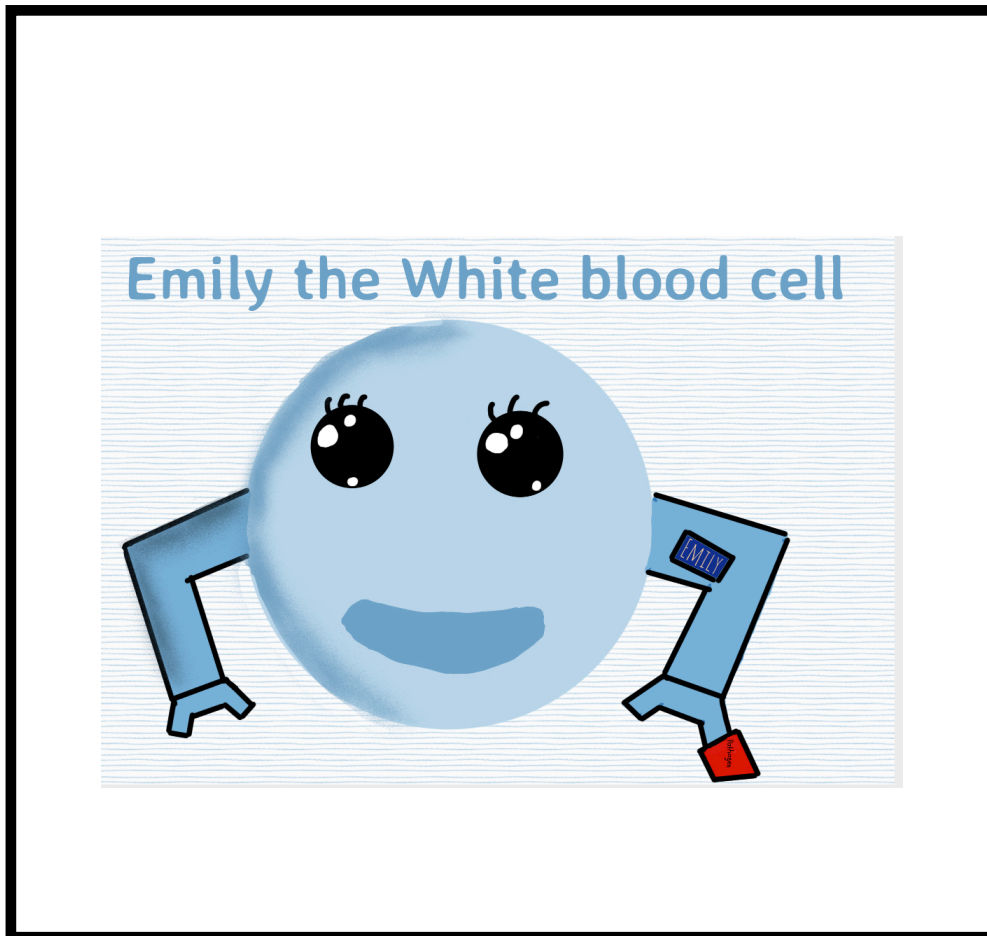


# Emily the White Blood Cell



Emily is a white blood cell. Her job is to find a pathogens and tag them for destruction. She then works with her friend Marty the Macrophage to destroy the evil pathogen. The little card in Emily's hand is to tag the pathogens for destruction.

Emily is part of a group special things called the immune system. The immune system is basically an elite group that protects the body.