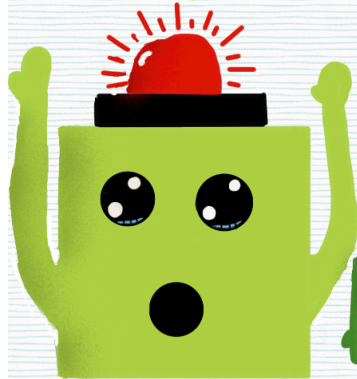
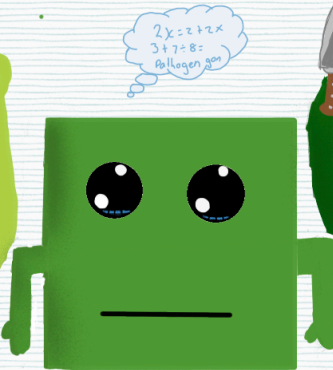


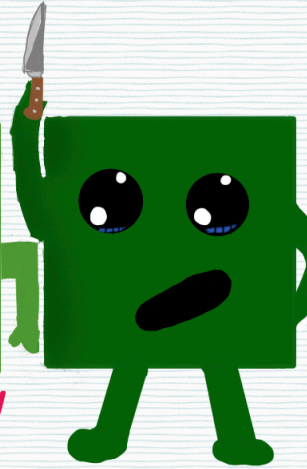
Tabitha, Terrence, and Taylor the T-cells






The Helper



The Memory



The killer

The T-cells are my absolute favourite cells. THEY'RE SO COOL. There is 3 types of T-cells. The helper's job is to basically be the alarm. This is Tabitha. When Tabitha sees a pathogen she sends a blaring alarm to get other cells to come help out and get rid of the pathogen. The memory is to remember the pathogen and how to destroy it. That way if the same type of pathogen comes again it can easily be destroyed. The memory also teaches the memory t-cells that come after it. So when the T-cell finally... dies... which is really sad, it teaches the little T-cells all the pathogens they've battled before. The killer T-cells job is to kill. Once the alarm has gone off the killer cell destroys the pathogen. It does this by realizing a kind of gas that destroys the pathogen. And yes, I know that I put in a knife but I have no idea how to draw the gas it releases so whatever. So the 3 T-cells are the helpers, the memory, and the killer. Or just remember it like    .